

Villa Ampella



9

Villa Ampella is a 3-bedroom town house and portion of a more extensive noble Villa. The villa is accessed from the central courtyard with its interior composed of 3 bedrooms, a large living/dining area complete with traditional fireplace that effortlessly leads onto a west-facing Pergola area for al fresco dining.

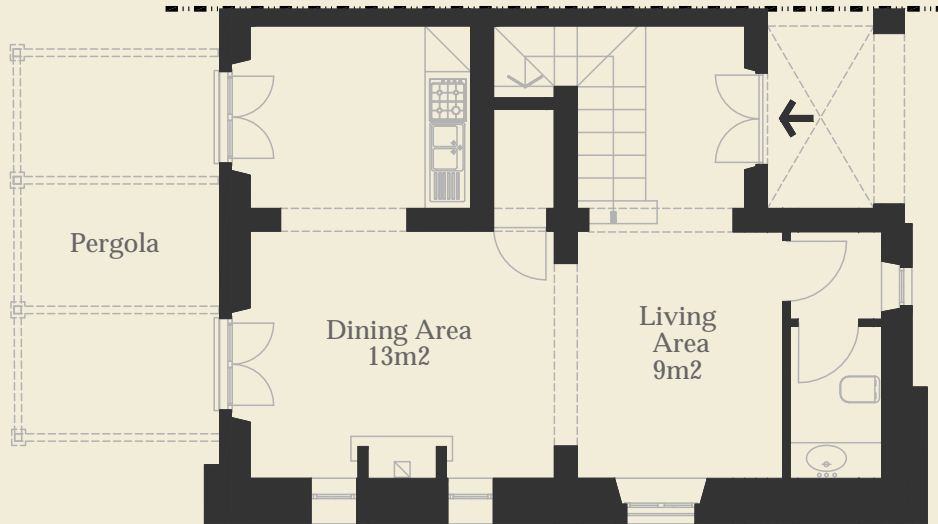


PODERE
AMPELLA

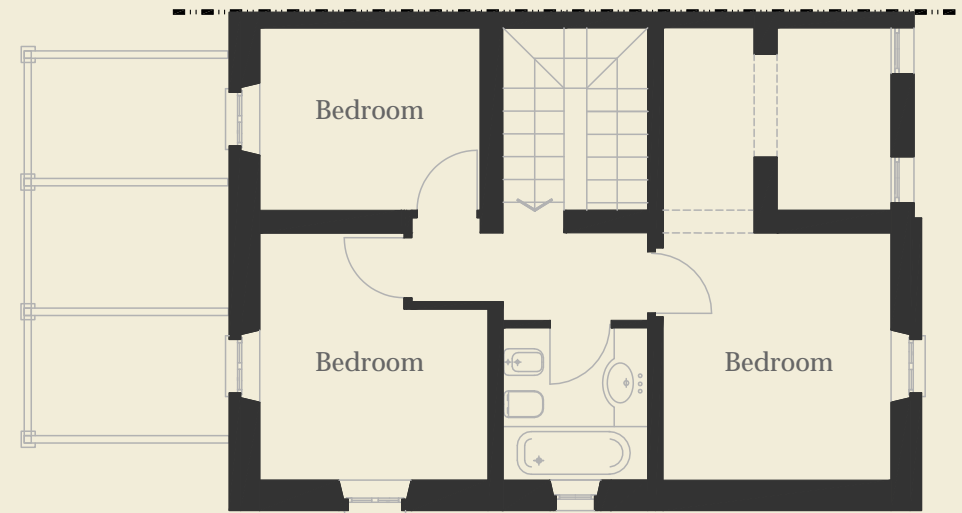


Villa Ampella

GROUND FLOOR



FIRST FLOOR



Villa Ampella

Features

Town house (120m²) with spacious living/dining area, 3 bedrooms, up to 3 bathrooms, pergola, large garden (389m²).