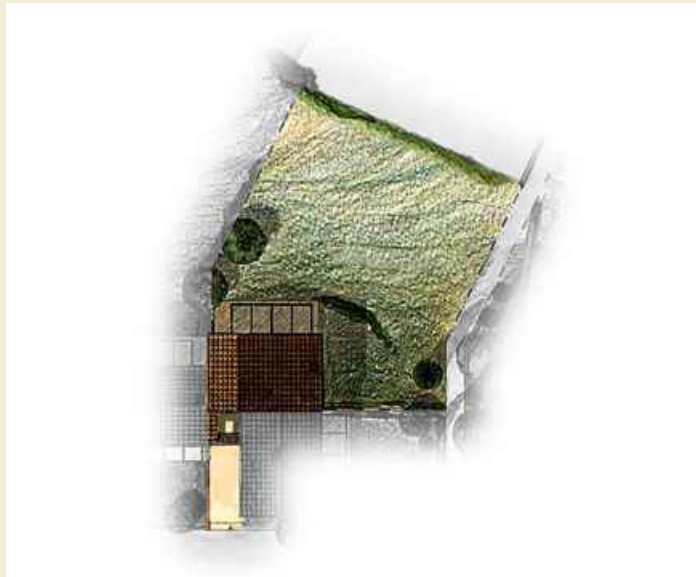


Casa Beppe

6



Casa Beppe is a characteristic 2-bedroom town house that probably enjoys the best views of the entire Podere Ampella. Casa Beppe is accessed from the central courtyard with its interior made up of a spacious living/dining area complete with traditional fireplace that effortlessly leads onto the Pergola area for breathtaking views. Casa Beppe also has a large (wine) cellar, private garden and is ideally located with its proximity to the communal pool.



PODERE
AMPELLA

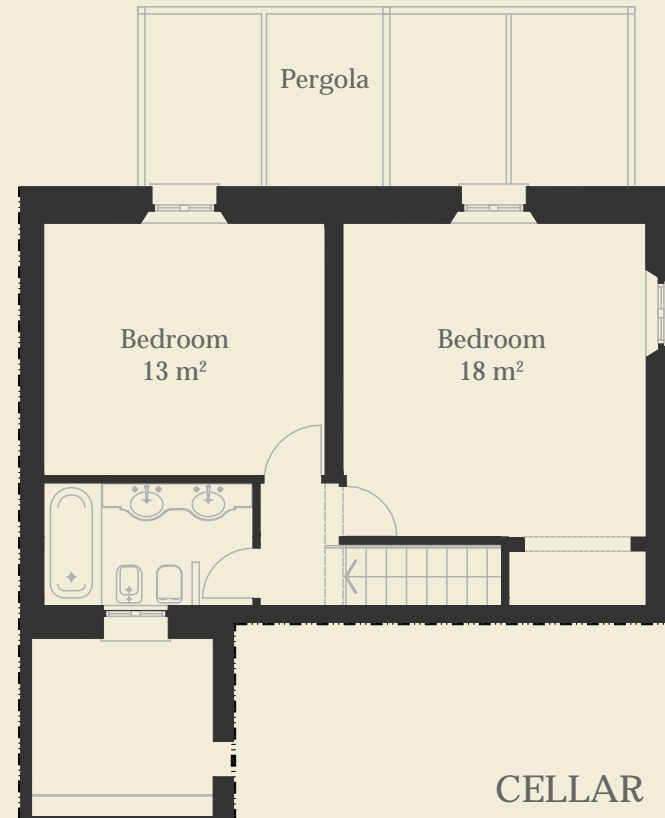


Casa Beppe

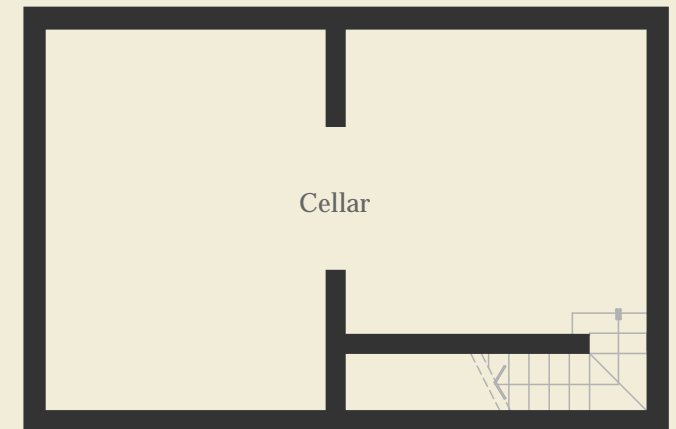
GROUND FLOOR



FIRST FLOOR



CELLAR



Casa Beppe

Features

Town house (120m²) with spacious living/dining area, 2 large bedrooms and 2 bathrooms, pergola, garden (480m²) and cellar (60m²).