

Casa di Sopra

1



Casa di Sopra is an elegant two-storey town house with nice vistas both north and southwards. The interior is made up of a spacious living/dining area with a traditional fireplace on the ground floor area leading onto a Pergola for al fresco dining, with 2 bedrooms and 2 bathrooms. The town house is accessed from the central courtyard and has a small private garden.

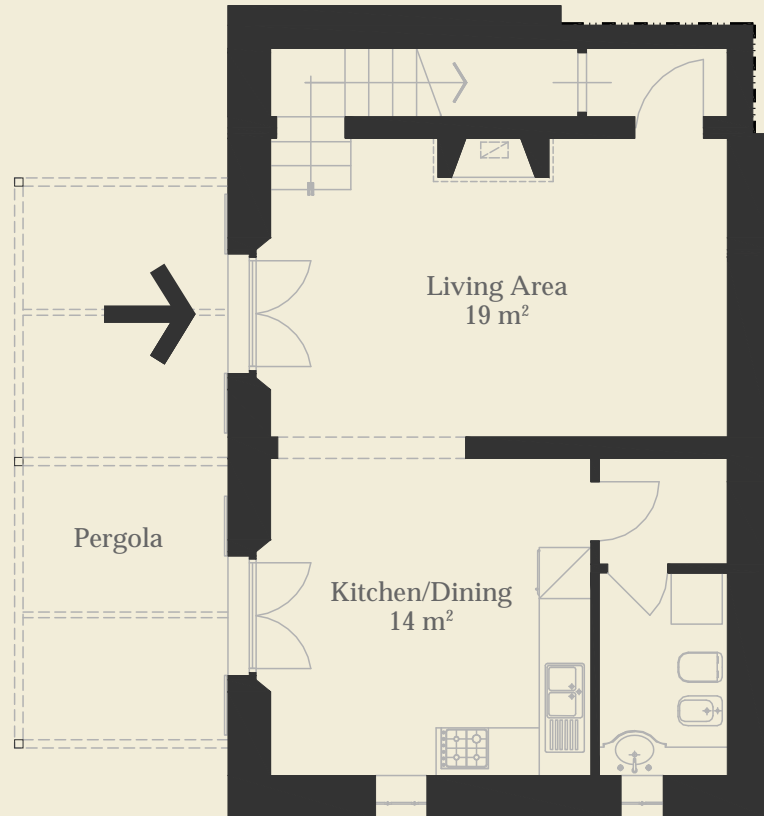


Casa di Sopra

PODERE
AMPELLA



GROUND FLOOR



Casa di Sopra

Features

Spacious living/dining area, 2 bedrooms and 2 bathrooms, pergola, private garden (town house – 120m², garden - 157m²).

FIRST FLOOR

